

TECHNOLOGY
UNPARALLELED

AUDIO



LED
VIDEO WALLS



LED VIDEO WALLS

LED Technology has gained exponential popularity in recent years, providing the highest quality display systems with pioneered technology.

LED walls have become a game changer for product launches, concerts, sporting events, trade fairs and conferences.



WHAT ARE LED VIDEO WALLS

LED Video Walls are metal tile frames that hold modules made up of Light Emitting Diodes (LEDs) that produce light, which is fed from a video processor that converts your video signal to light. When enough LEDs are close enough to each other, and are processed well, the end result is bright, high contrast, stunning video.



WHY CHOOSE LED VIDEO WALLS



Visual Perfection

LED video walls produce high-resolution graphics and crisp imagery elevating the conventional viewing experience.

Dynamic Content

Keep your audience entertained using high-resolution dynamic video content. Even during intermissions in your concert; ambient video graphics can keep your audience excited as to what's up next.

Exceptionally Durable & Weather Resistant

Our LED Display systems are designed and ruggedly built to withstand adverse weather conditions. There is no impact on the picture quality whether it is battering down or scorching in the heat. No matter what the weather, our screens continue to provide you with truly breathtaking video displays.

Unmatched Brightness

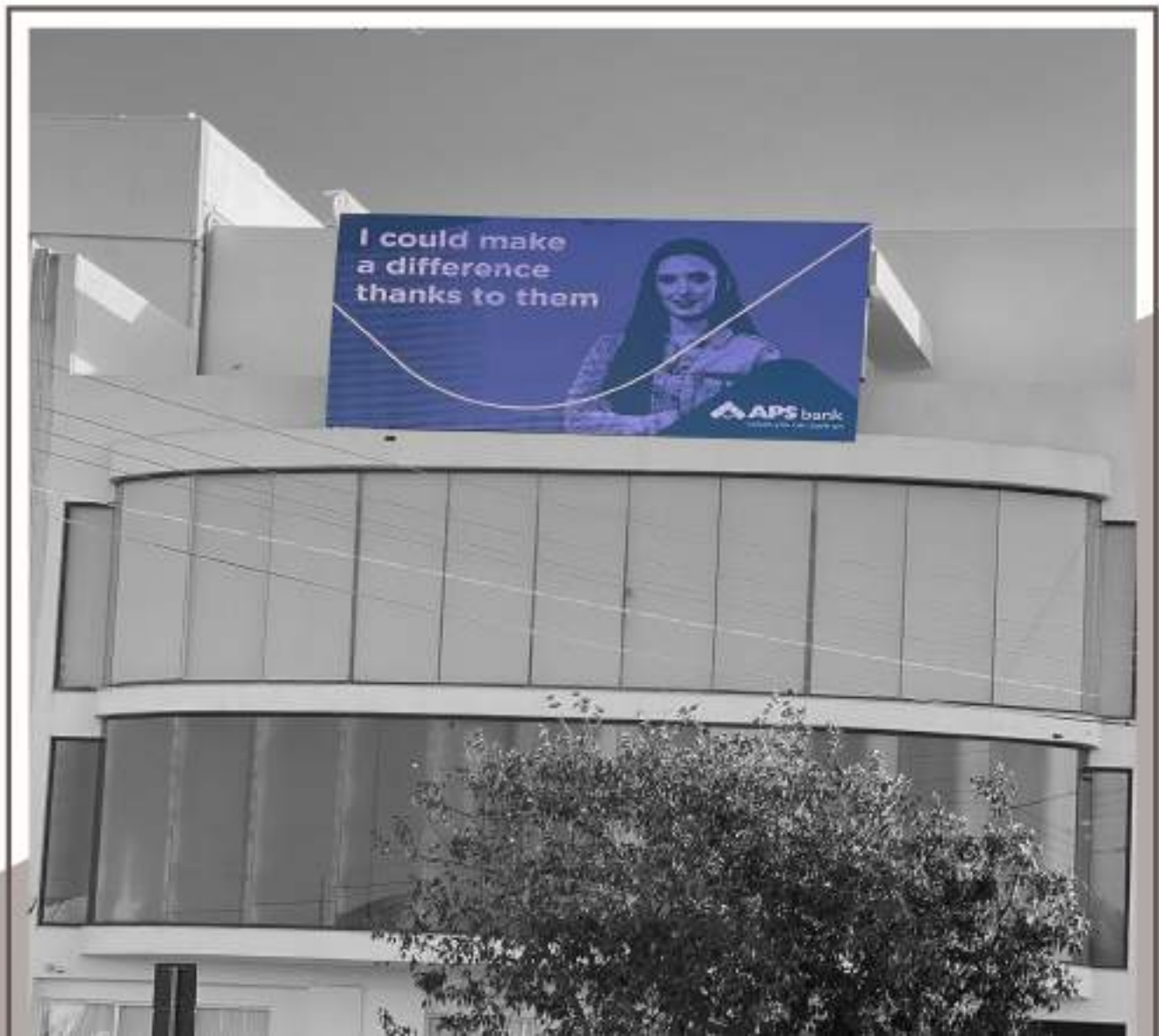
The brightness of your surroundings will not impact the cutting-edge display quality, even in high ambient light environments.

Seamless Panoramic Footage

LED video wall technology delivers seamless pictures measured to any size and shape, even if it is curved. Blending into the built-in environment around the wall, your audience will experience breathtaking visuals from every angle.

POPULAR APPLICATIONS

- CONCERTS
- TRADE FAIRS
- CONFERENCES
- PRODUCT LAUNCHES
- WEDDINGS
- RETAILS STORES
- AIRPORTS
- AMUSEMENT PARKS



RESOLUTION AND SIZE

PIXEL PITCH OF
2.5 mm - 5.5 mm
WITH SUPERIOR FONT

Sizes vary from
2 meters x 2 meters
2 meters x 4 meters
4 meters x 6 meters



MOUNTING OPTIONS

Unmatched uniformity with wide viewing angle. No seams or bezels which makes the display look very attractive and seamless.



FLAT PANEL



JOINT EDGES



ARCHED MODULE



SPHERICAL SHAPED

INDOOR AND OUTDOOR SOLUTIONS



Built for the most demanding environments, from stadium scoreboards and concert venue backdrops to storefront advertising and transportation signage, we offer you the most durable outdoor LED video wall solutions which deliver impactful visual experiences, withstand the weather and are bright even in the sunlight.

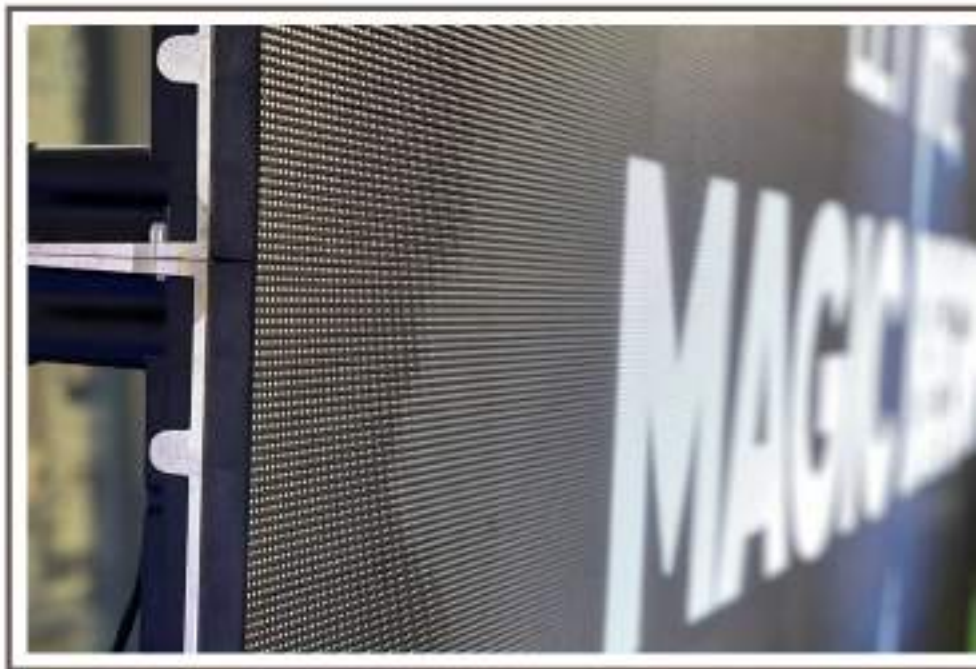
Whether it's high-detail content viewed up close in a boardroom or massive digital signage hanging in an airport, our seamless, direct view LED display solutions suit almost every indoor application.





Elegant Simplicity designed as a freestanding structures for concerts and stage shows or mountable modules for advertising solutions







MALTA INTERNATIONAL AIRPORT





ARRIVALS AND DEPARTURES





LED EXCELLENCE AUDIO

Audio Malta has a local team of pre-sales and post-sales technical and application experts determined to ensure customers select the right display solutions, and keep them performing their best.

DUTIFULLY DELIVERY

VISUAL EXPERIENCES

PROVEN TECHNOLOGY



AUDIO

26 C, Triq L-Ispiera
Swieqi - SWQ 3081
Malta

www.audiomalta.com
info@audiomalta.com

+356 2138 2876
+356 7947 6491

LOOK FOR US ON

